

Installation process of Print Control Proxy software

PCP System Requirements

The following are the system requirements for the end-user's machine:

Operating System: Windows 7 or later

.NET Framework: version 3.0 or higher (typically part of the default Windows installation)

Web browser: Internet Explorer 10 or higher. Alternatively, the latest version of Mozilla Firefox or Chrome can also be used

Note: PCP is not supported in Microsoft Edge browser at the moment. Windows10 users can use PCP with Internet Explorer 11

Facing problem while printing please follow the below shown procedure

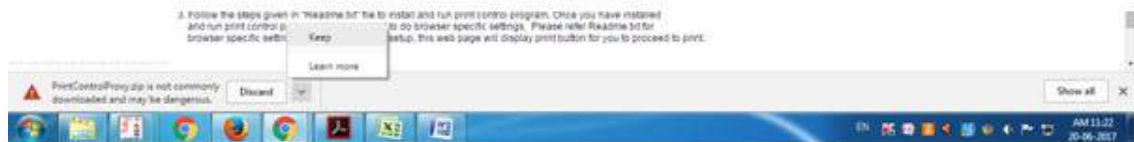
1. Enter CAPTCHA properly Than click here.



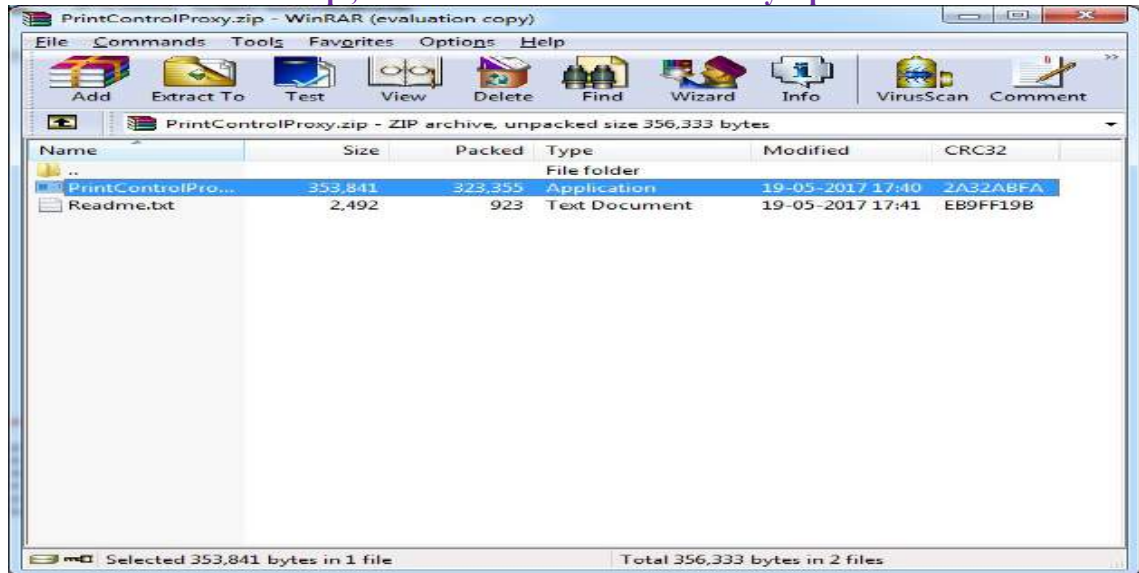
2. Pop-up download will start(wait for full download)



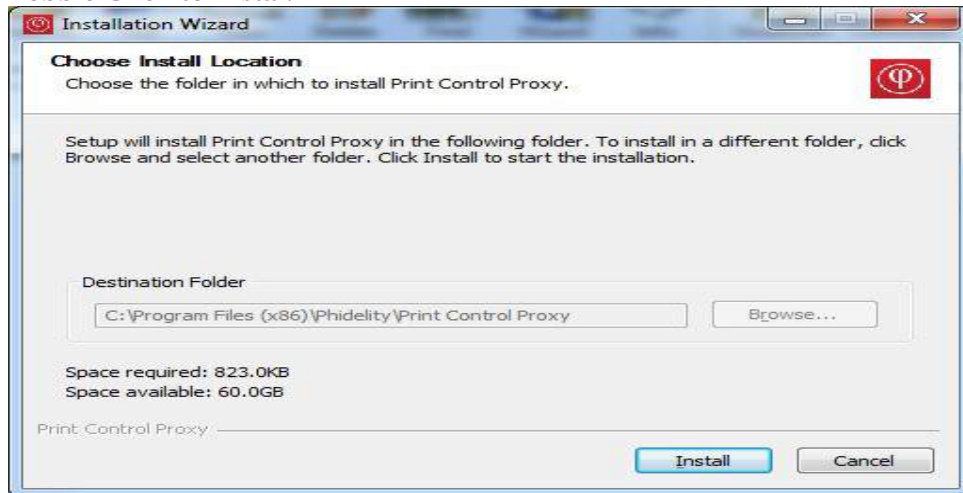
3. After download if not support or shown as discard-Select>down button and click on Keep



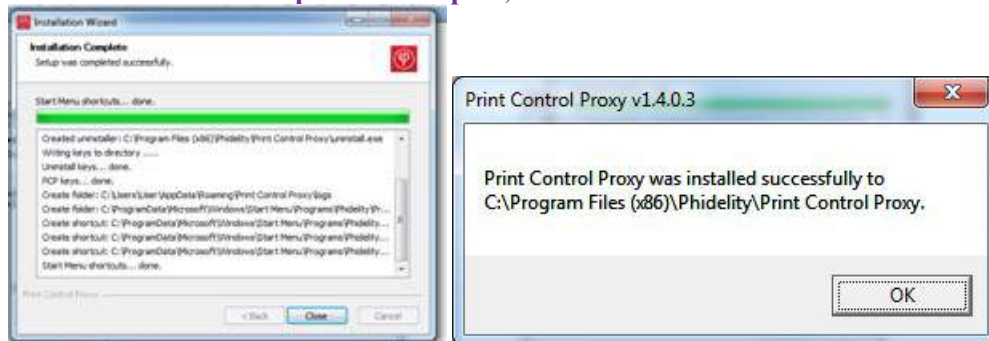
4. Goto downloaded PCP.zip., file. Click on PrintControlProxy.zip



5. Double Click to Instal.



6. Wait untill instalation process compete, than click on OK

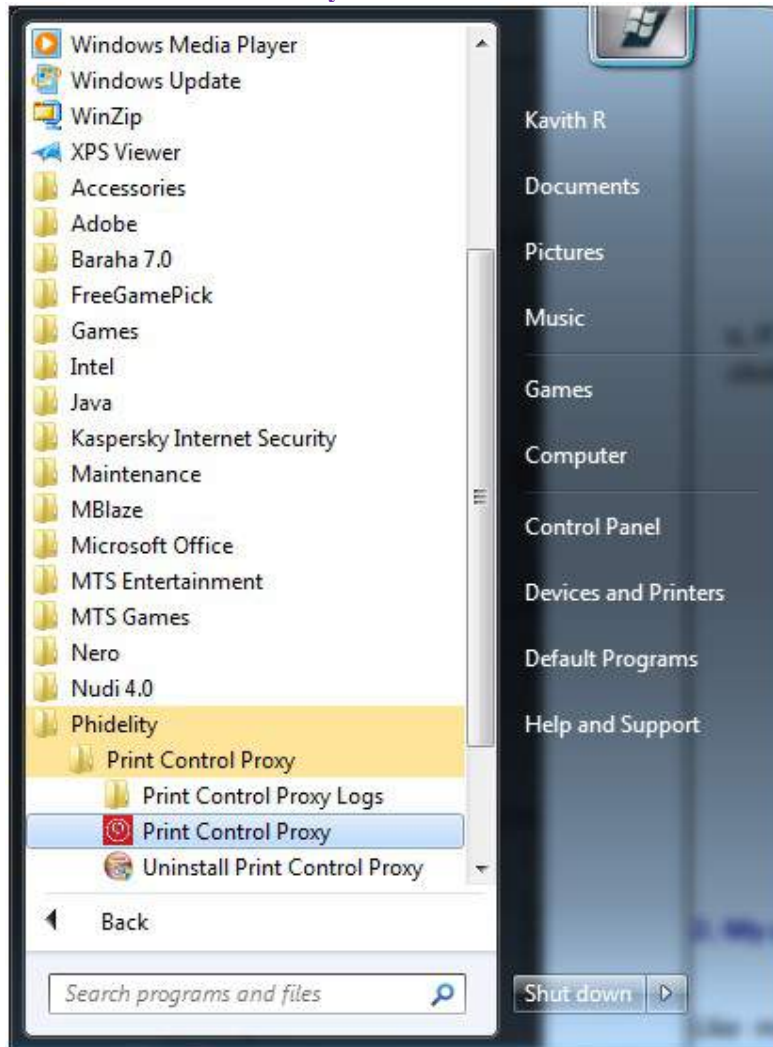


If Unable to print after installation. Follow below steps

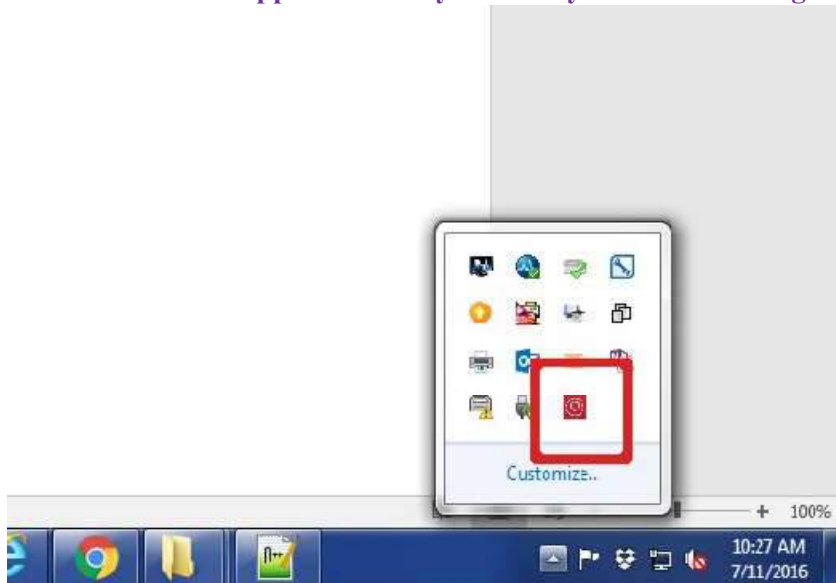
1. Start Menu > All Programs > Phidelity > Print Control Proxy



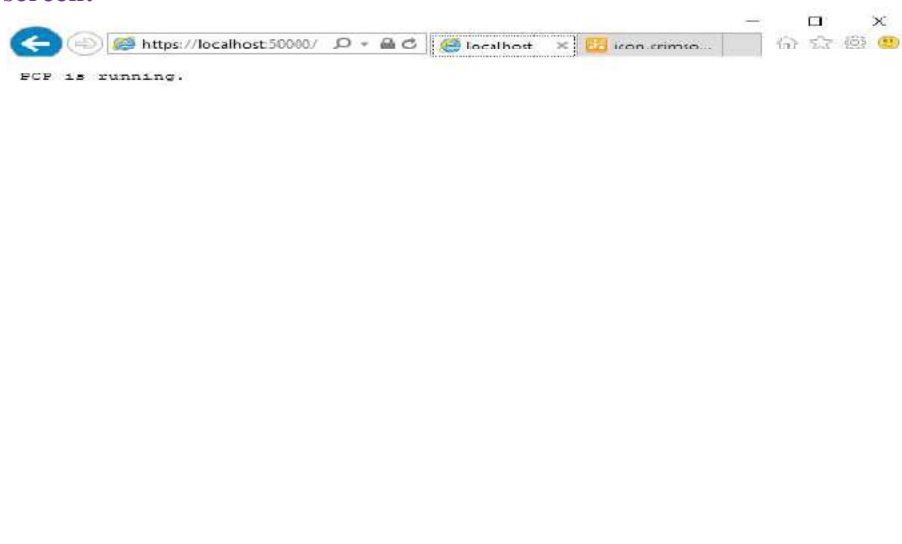
2. Select Print Control Proxy.



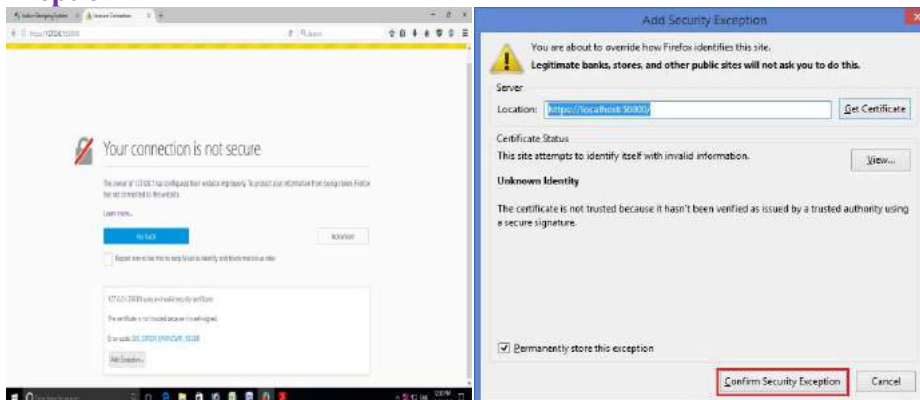
3. The PCP icon will appear in the System Tray at the bottom right of your screen.



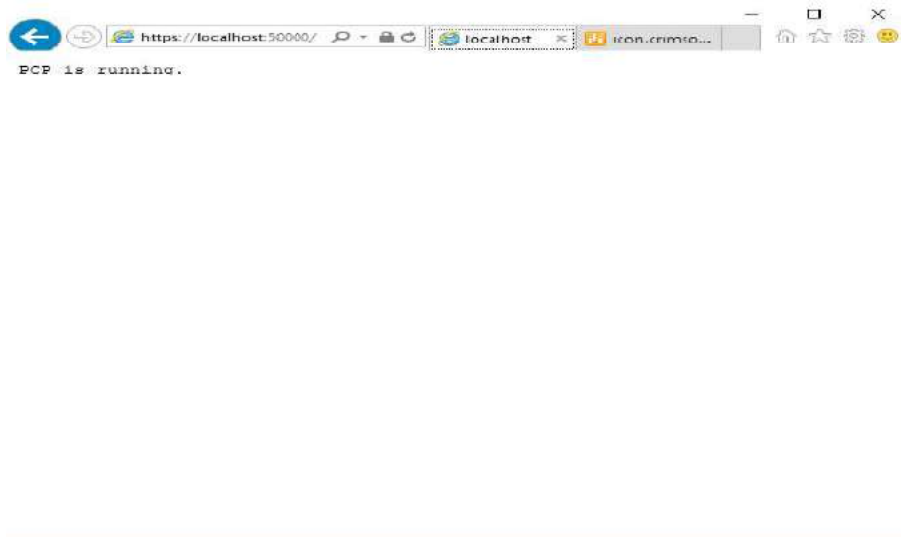
4. After confirmation, Click on <https://127.0.0.1:50000> You should see the following screen:



5. If not support or Show as below error, Click on Advance setting than "Add Exeption"



6. Click on <https://127.0.0.1:50000> You should see the following screen:



7. After Below screen will appear than, Select Printer.

